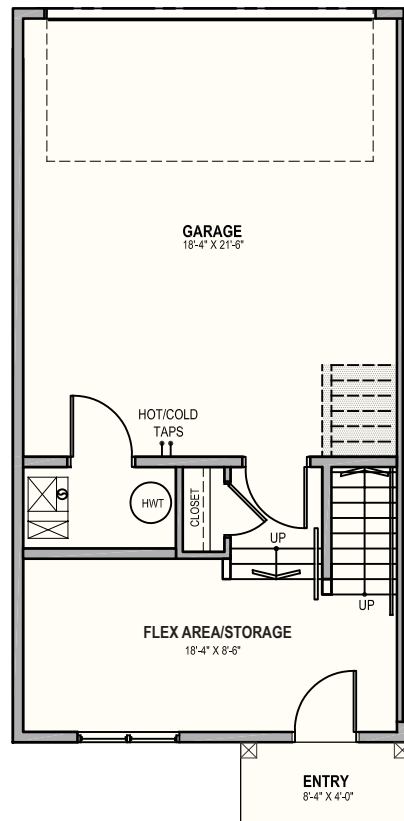
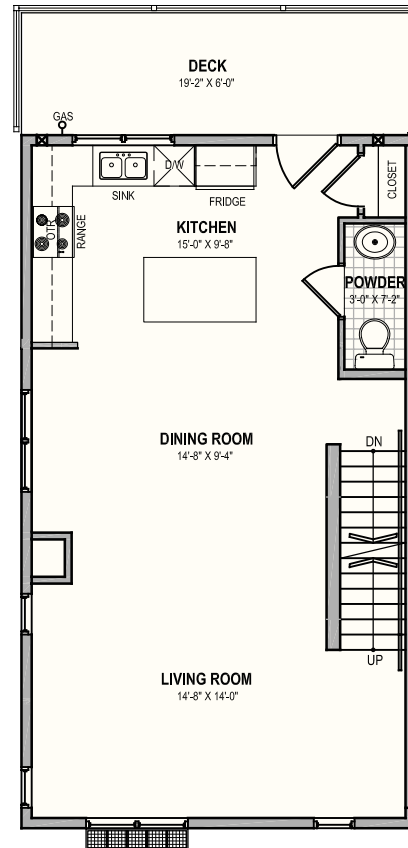


Plan B

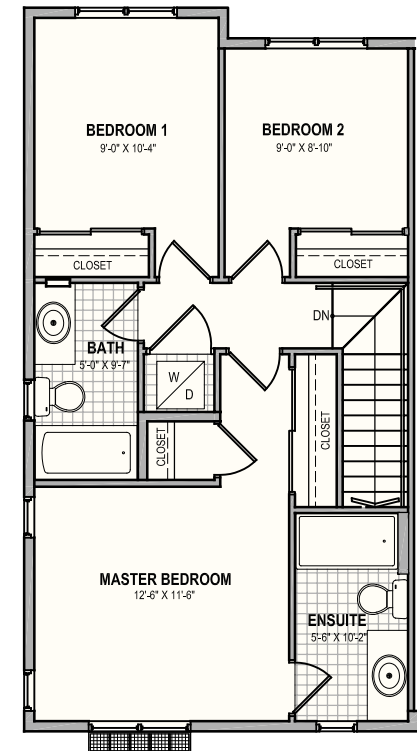
3-Bedroom - Approx 1,586 sq ft



GROUND FLOOR
268 sq ft.



MAIN FLOOR
652 sq ft.



UPPER FLOOR
666 sq ft.

79 – 903 Crystallina Nera Way, North Edmonton
Mon - Thurs: 3 – 7pm | Sat, Sun & Hol: 12 – 5pm
or call 780.472.7544 for an appointment