

park homes

IMMEDIATE POSSESSION!

QUARTZ COUNTERTOPS!

TOPAZ

parkhomes.ca

NORTH EDMONTON
SPACIOUS TOWNHOMES



A close-up, low-angle shot of the rear of a silver car. The focus is on the rear light assembly, which features a prominent red and yellow LED light signature. The car's body is sleek and metallic. In the background, a blurred interior of a parking garage with overhead lights is visible.

CONVENIENT ATTACHED
TWO-CAR GARAGES



STYLISH & SPACIOUS DESIGNER KITCHENS
WITH QUARTZ COUNTERS

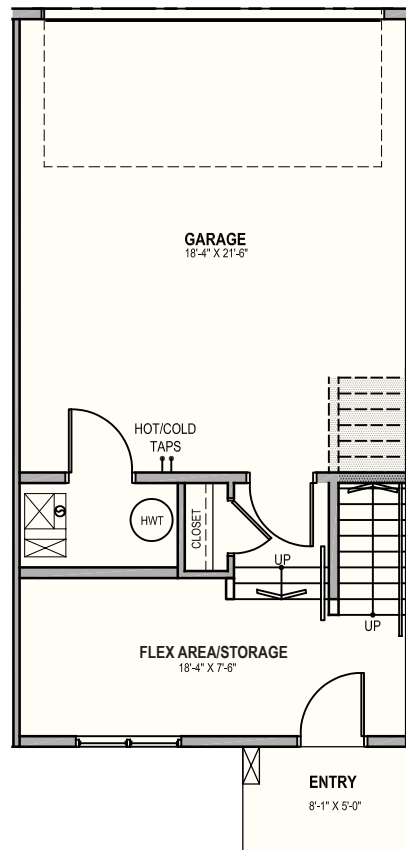
OPEN-CONCEPT LIVING

WITH 9' MAIN FLOOR CEILINGS

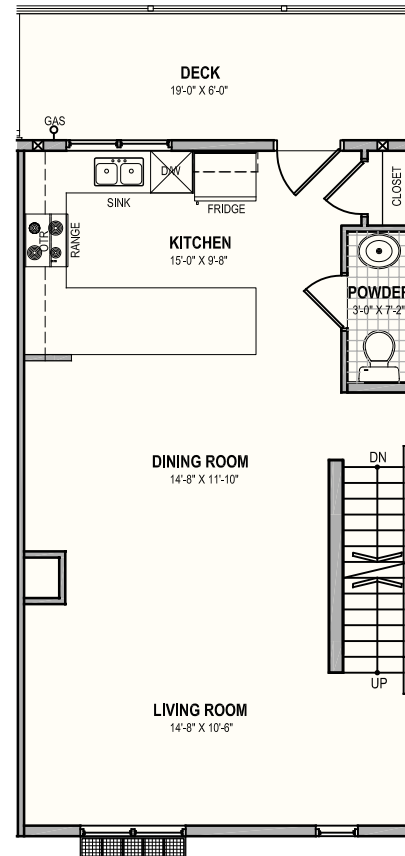


Plan A

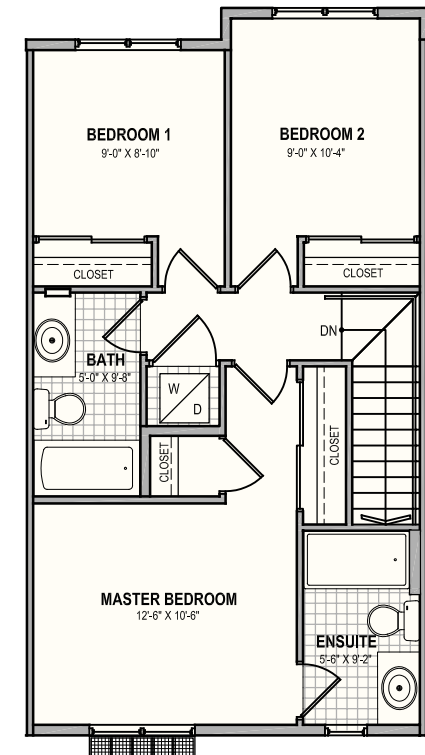
3-Bedroom - Approx 1,513 sq ft



GROUND FLOOR
247 sq ft.



MAIN FLOOR
627 sq ft.

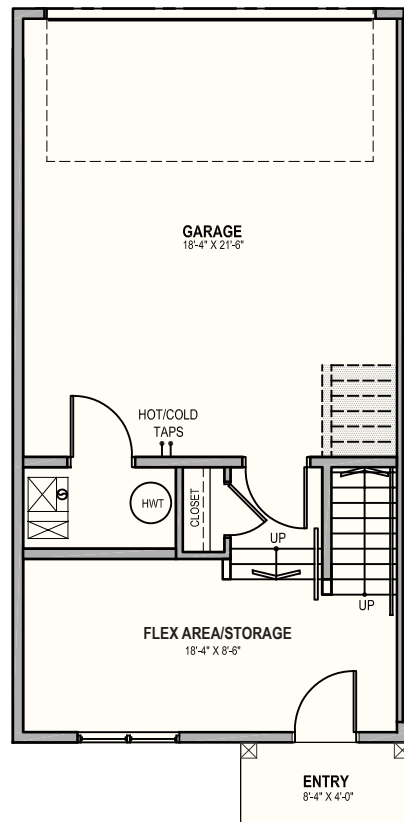


UPPER FLOOR
639 sq ft.

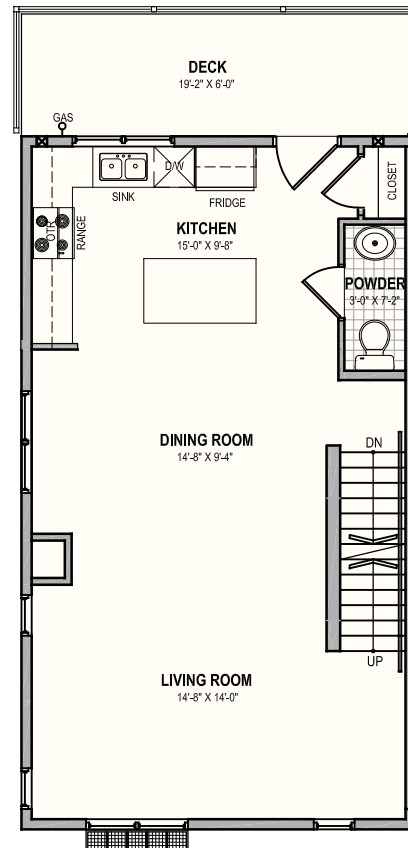
79 – 903 Crystallina Way, North Edmonton
780.472.7544

Plan B

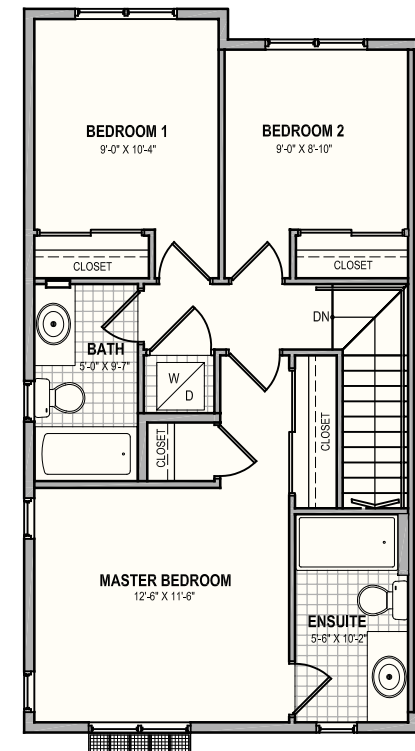
3-Bedroom - Approx 1,586 sq ft



GROUND FLOOR
268 sq ft.



MAIN FLOOR
652 sq ft.

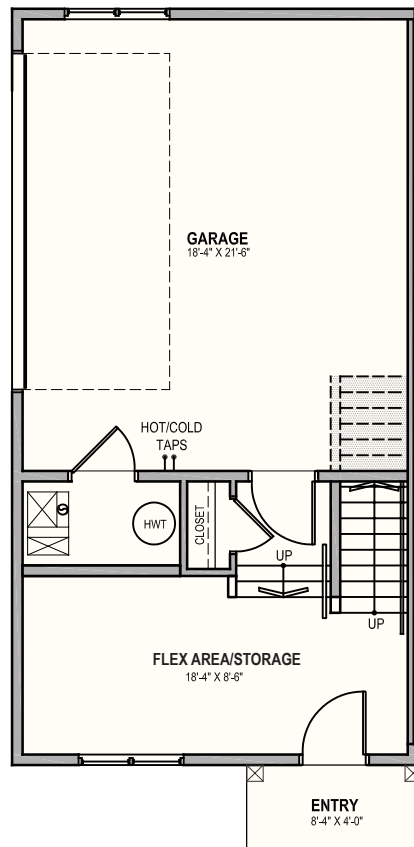


UPPER FLOOR
666 sq ft.

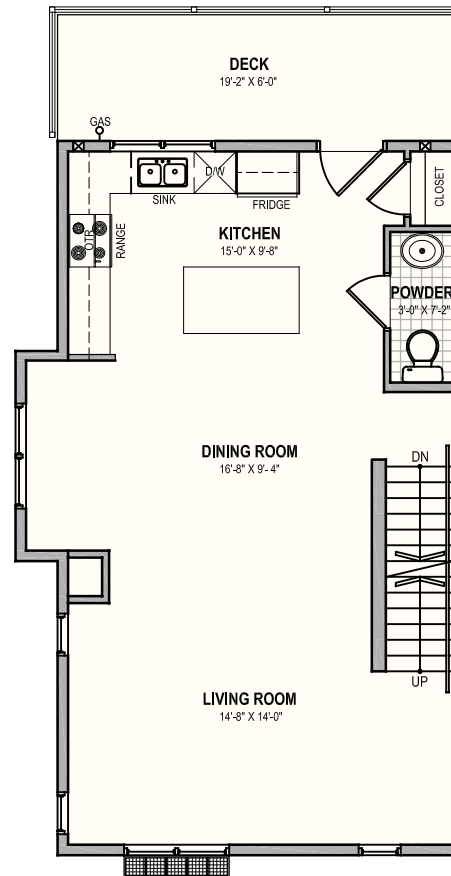
79 – 903 Crystallina Way, North Edmonton
780.472.7544

Plan B2

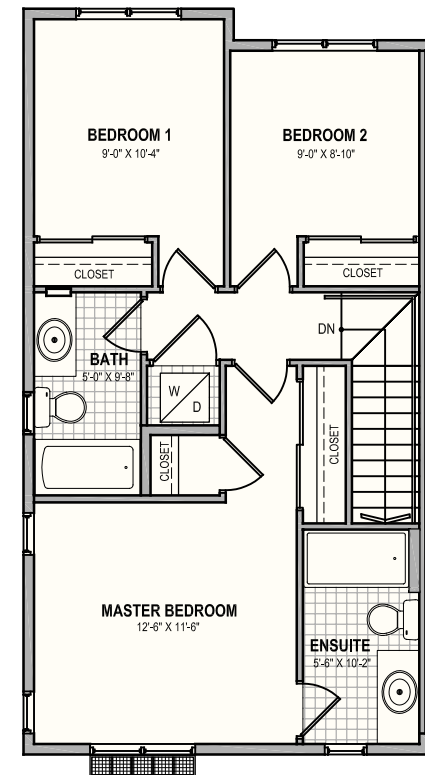
3-Bedroom - Approx 1,606 sq ft



GROUND FLOOR
268 sq ft.



MAIN FLOOR
672 sq ft.

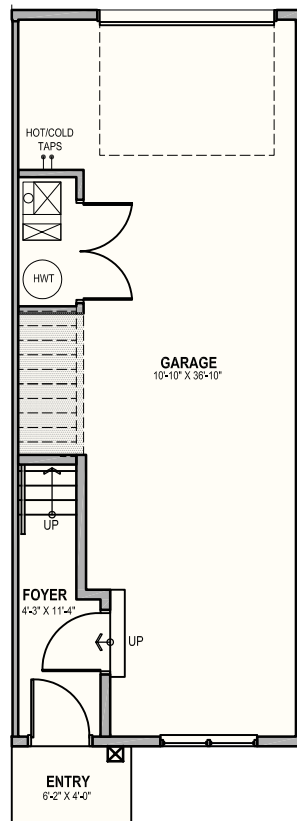


UPPER FLOOR
666 sq ft.

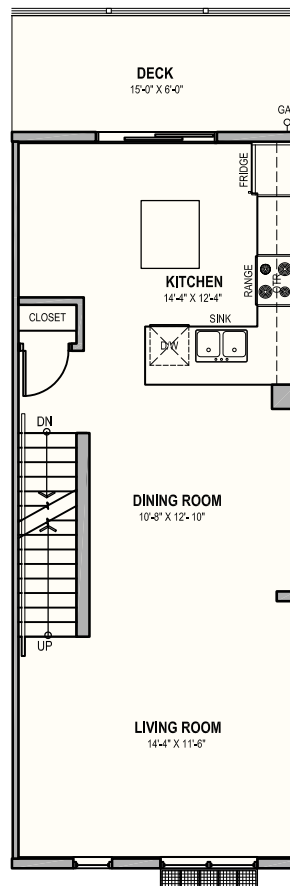
79 – 903 Crystallina Way, North Edmonton
780.472.7544

Plan C1

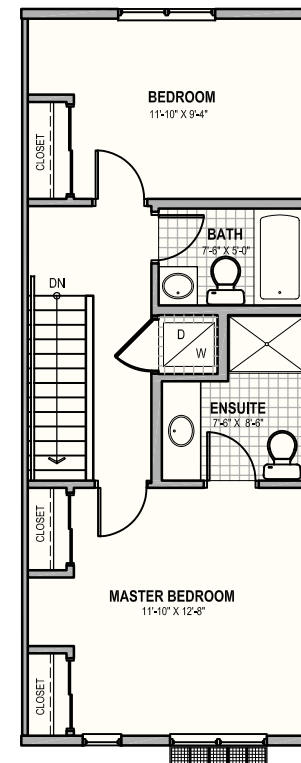
2-Bedroom - Approx 1,208 sq ft



GROUND FLOOR
68 sq ft.



MAIN FLOOR
570 sq ft.

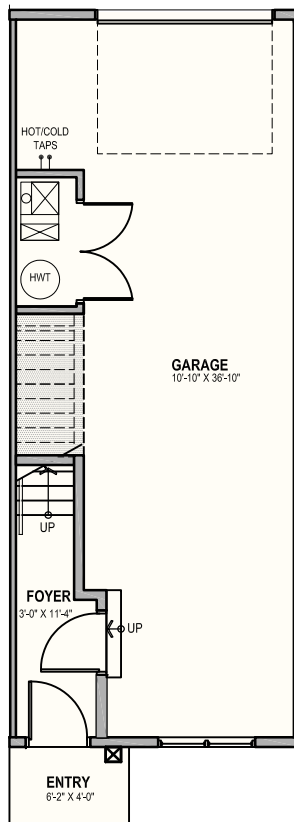


UPPER FLOOR
570 sq ft.

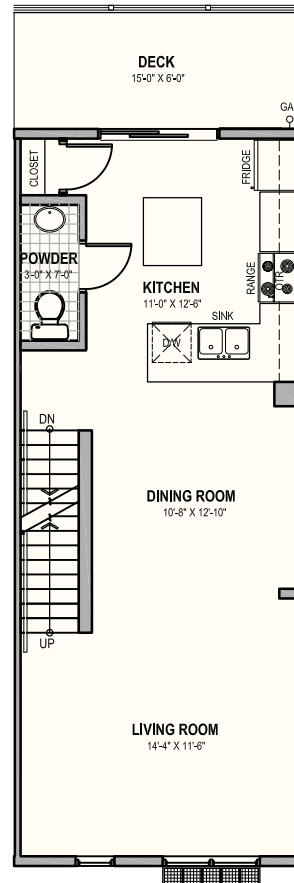
79 – 903 Crystallina Way, North Edmonton
780.472.7544

Plan C1 - Optional Upgrade: Powder Room

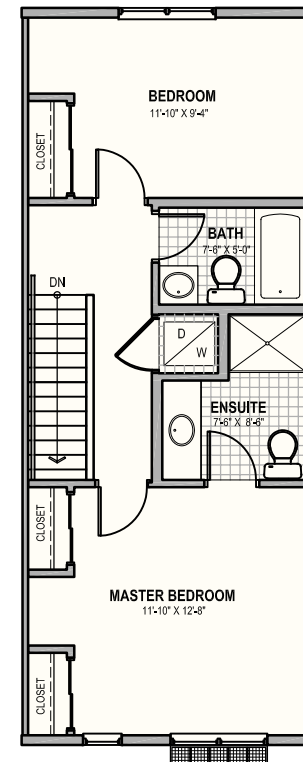
2-Bedroom - Approx 1,208 sq ft



GROUND FLOOR
68 sq ft.



MAIN FLOOR
570 sq ft.

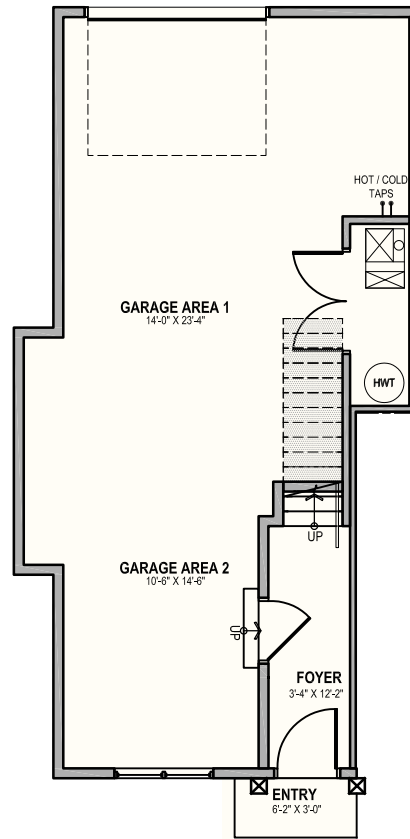


UPPER FLOOR
570 sq ft.

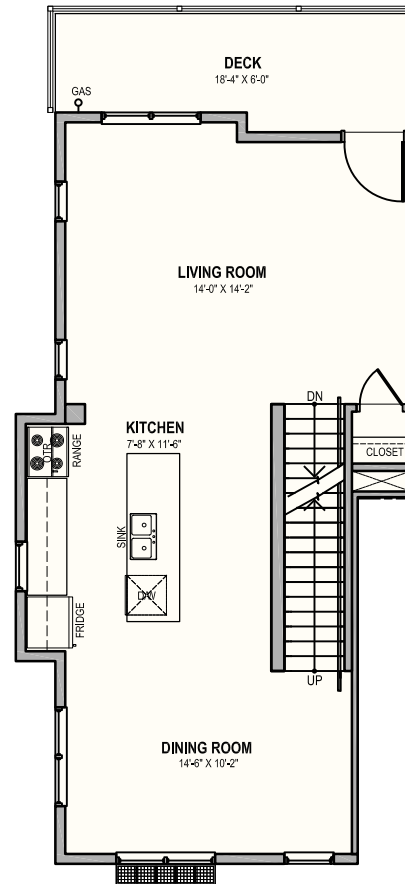
79 – 903 Crystallina Way, North Edmonton
780.472.7544

Plan D3

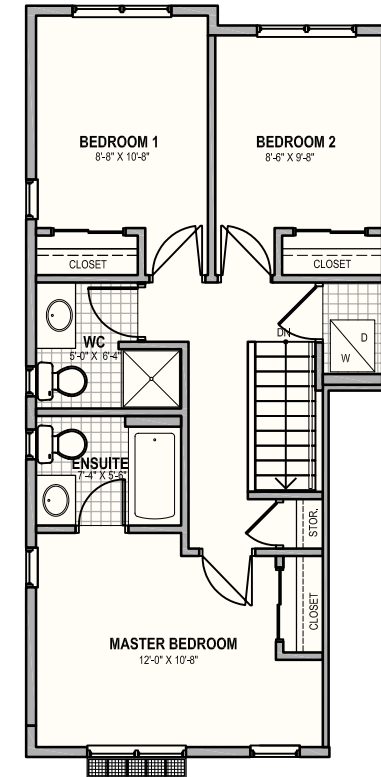
3-Bedroom - Approx 1,364 sq ft



GROUND FLOOR
73 sq ft.



MAIN FLOOR
658 sq ft.

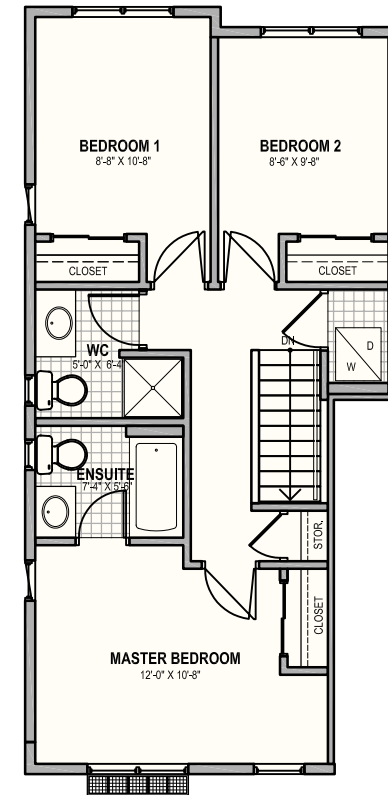
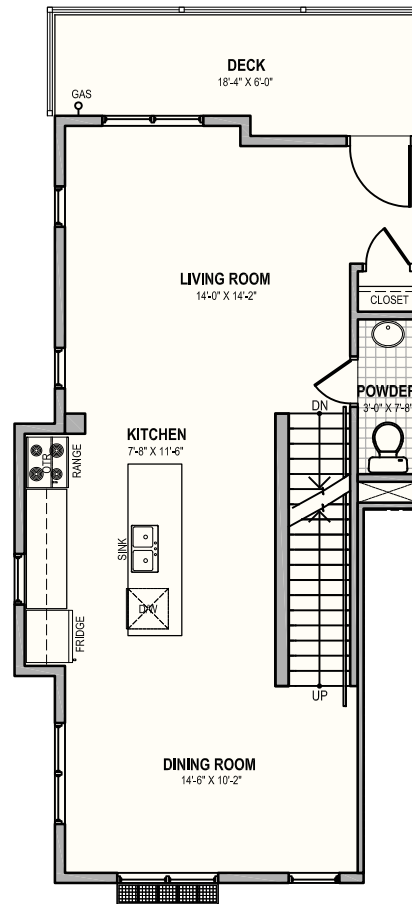
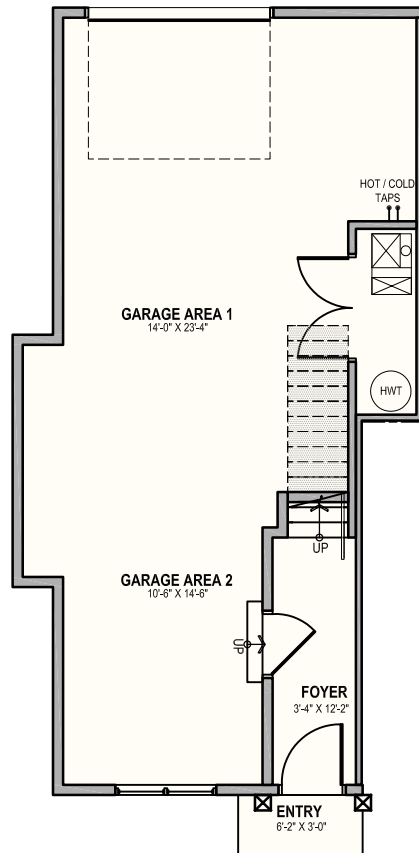


UPPER FLOOR
633 sq ft.

79 – 903 Crystallina Way, North Edmonton
780.472.7544

Plan D3 - Optional Upgrade: Powder Room

3-Bedroom - Approx 1,364 sq ft



79 – 903 Crystallina Way, North Edmonton
780.472.7544

park homes



TOPAZ

79 – 903 Crystallina Nera Way, Edmonton

780.472.7544

topaz@parkhomes.ca

parkhomes.ca