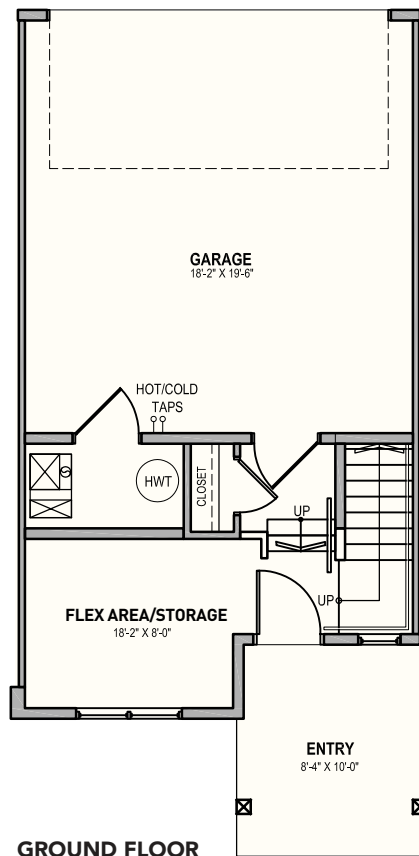


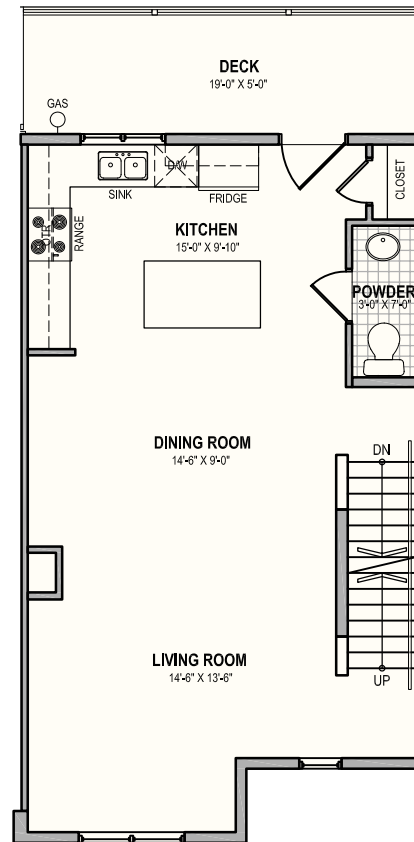
park homes

Unit E

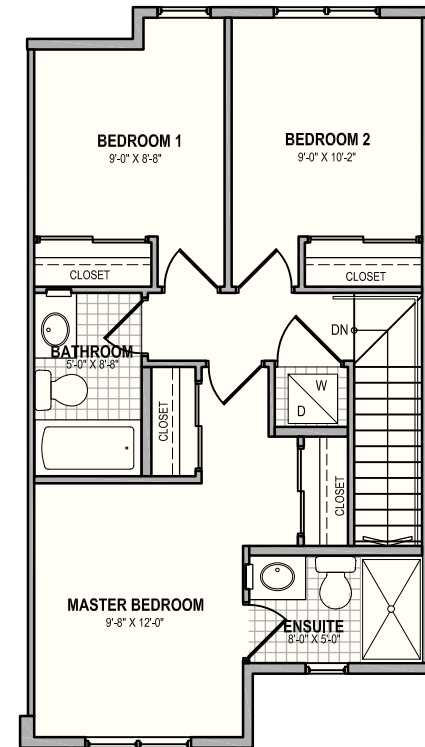
3-Bedroom - Approx 1,462 sq ft



GROUND FLOOR
227 sq ft.



MAIN FLOOR
607 sq ft.



UPPER FLOOR
628 sq ft.

655 Watt Boulevard (off Ellerslie Road)
Mon - Thurs: 3 – 8pm | Sat & Sun: 12 – 5pm
or call 780.701.5616 for an appointment