

park homes



CLIO

parkhomes.ca

FORT SASKATCHEWAN

SPACIOUS 1,542 SQ FT TOWNHOMES



ATTACHED OVERSIZED
TWO-CAR GARAGES





SPACIOUS DESIGNER KITCHENS
WITH QUARTZ COUNTERS

parkhomes.ca

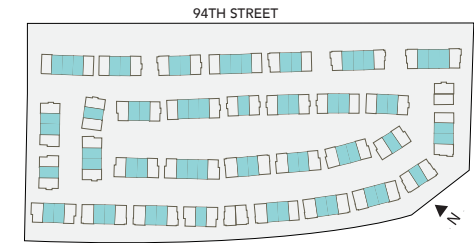
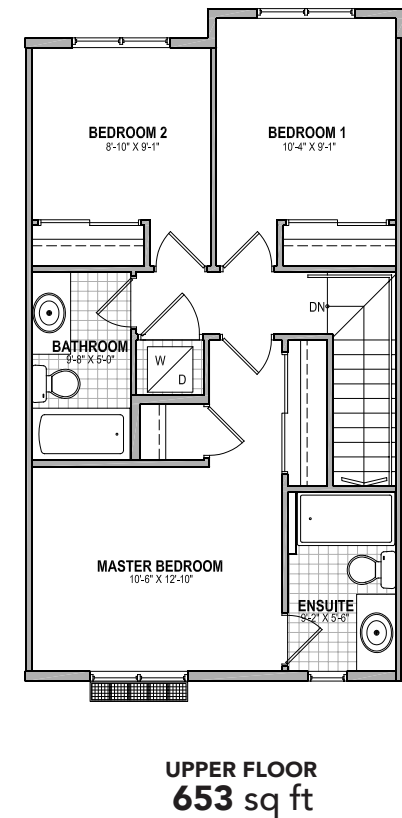
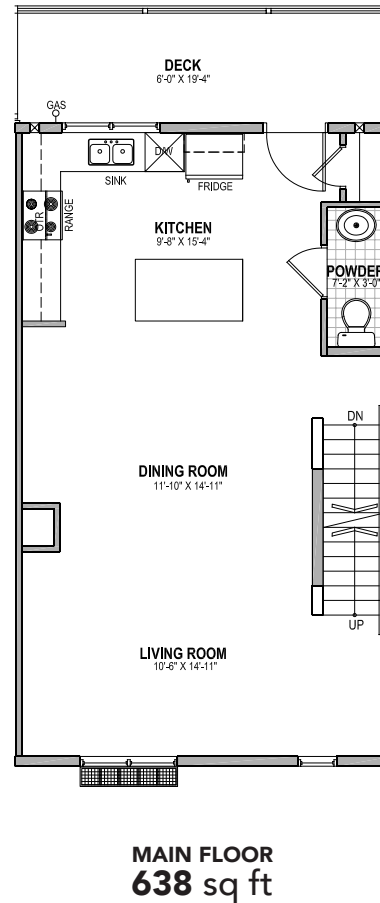
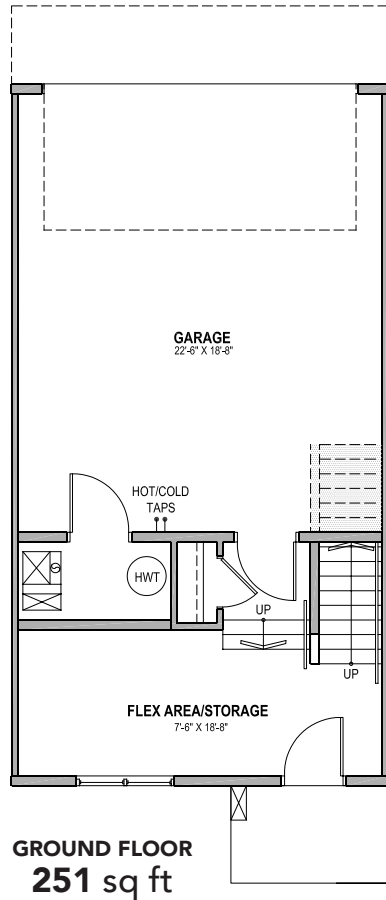


OPEN-CONCEPT LIVING
WITH LAMINATE FLOORING ON MAIN FLOOR

parkhomes.ca

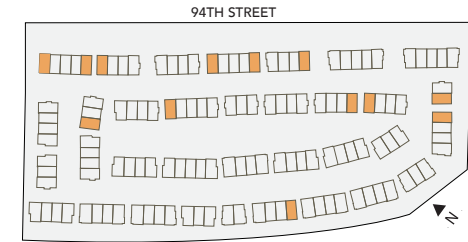
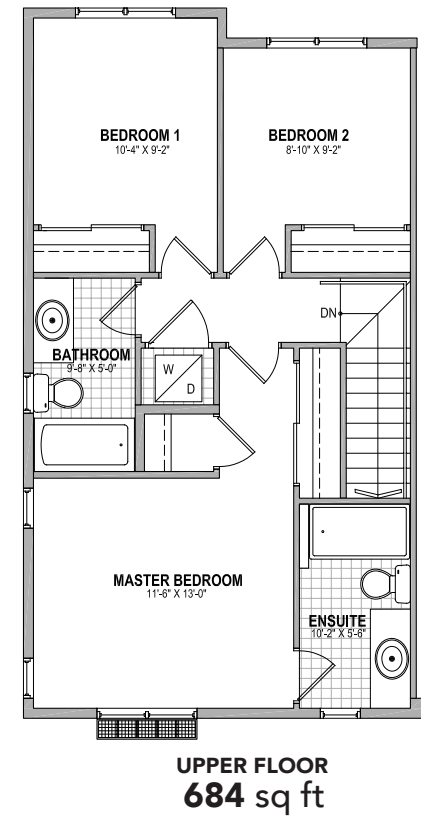
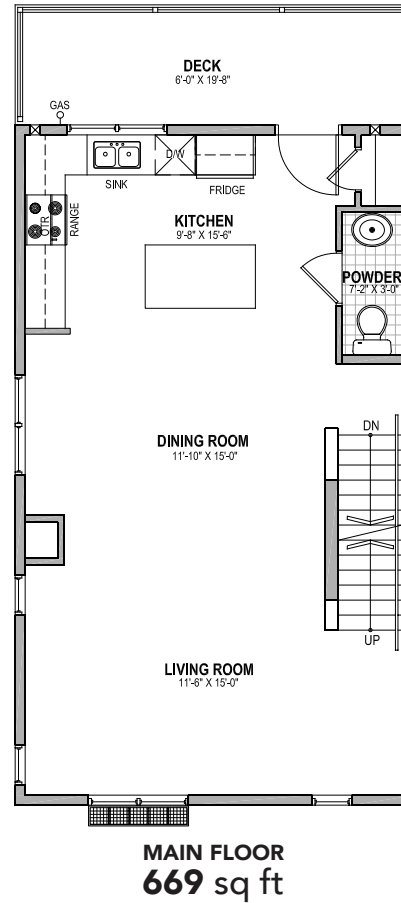
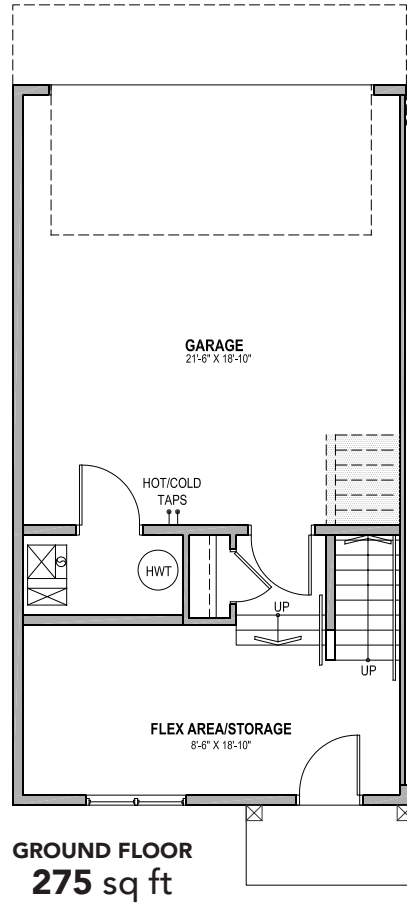
Plan A

3-Bedroom - Approx 1,542 sq ft



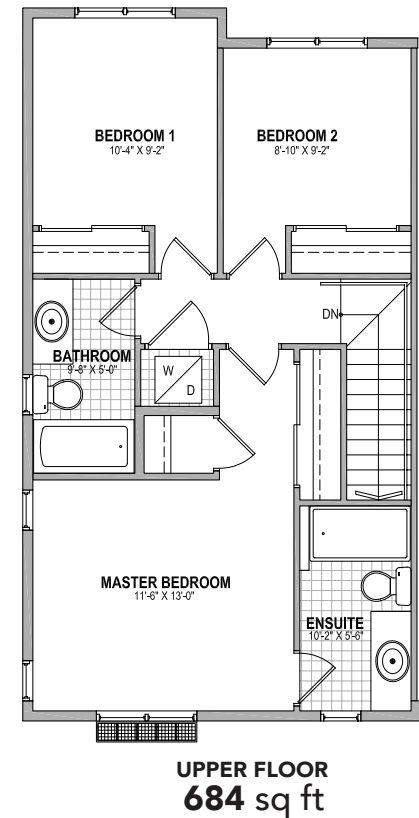
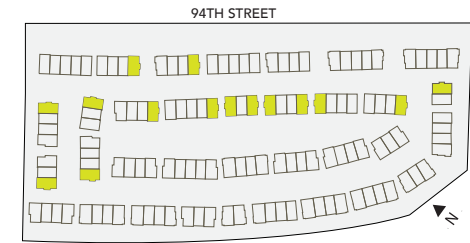
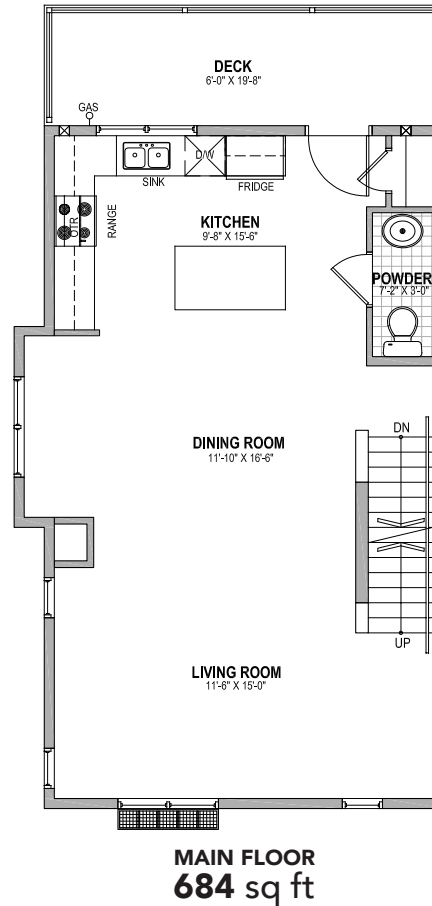
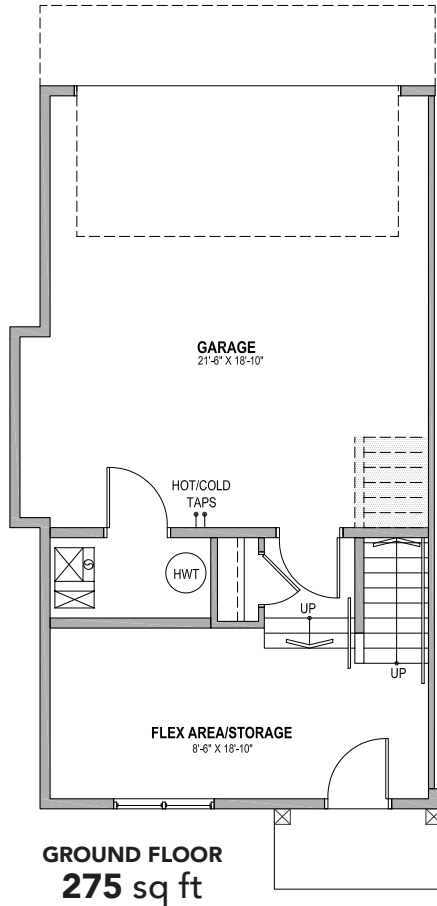
Plan B

3-Bedroom - Approx 1,628 sq ft



Plan B1

3-Bedroom - Approx 1,643 sq ft

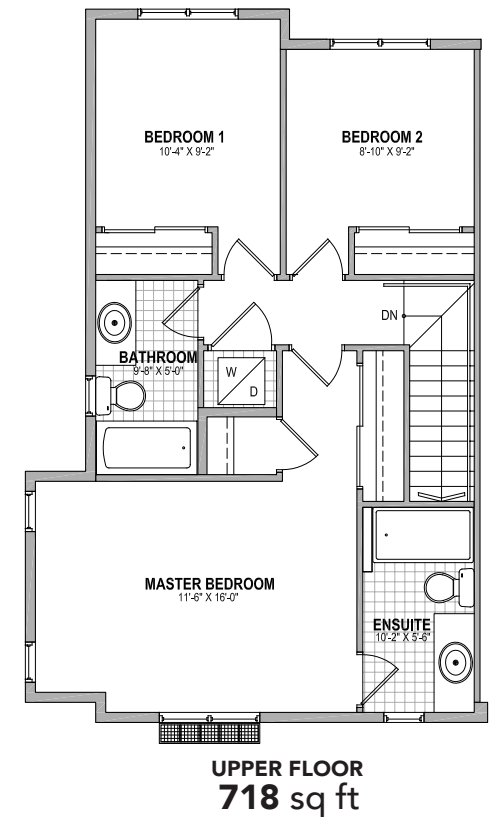
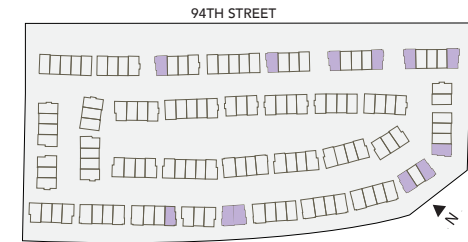
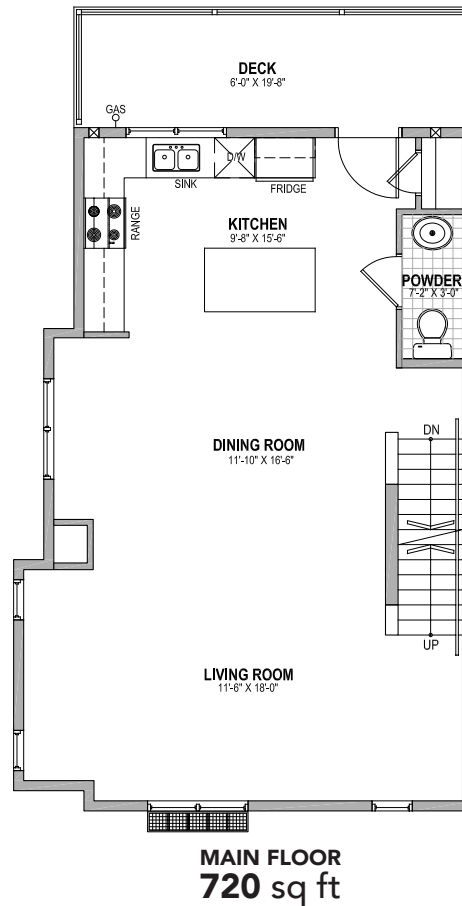
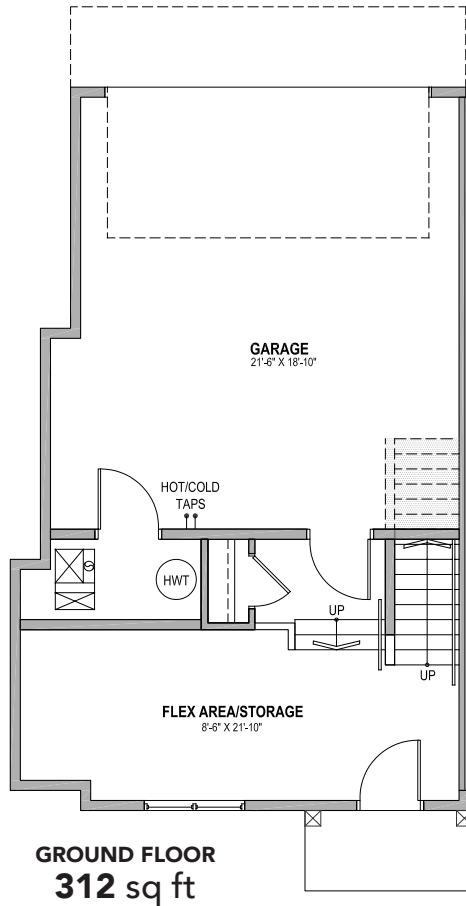


300, 8530-94 Street, Fort Saskatchewan

By appointment only. Call 780.809.8589

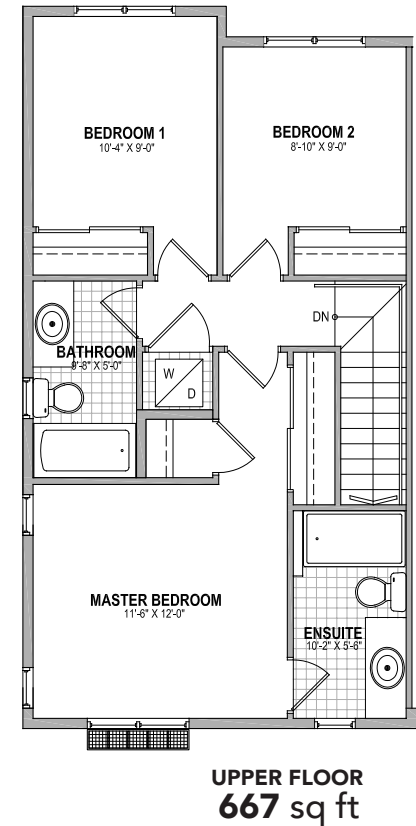
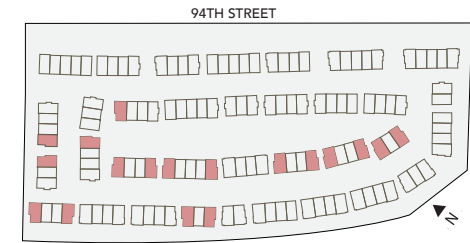
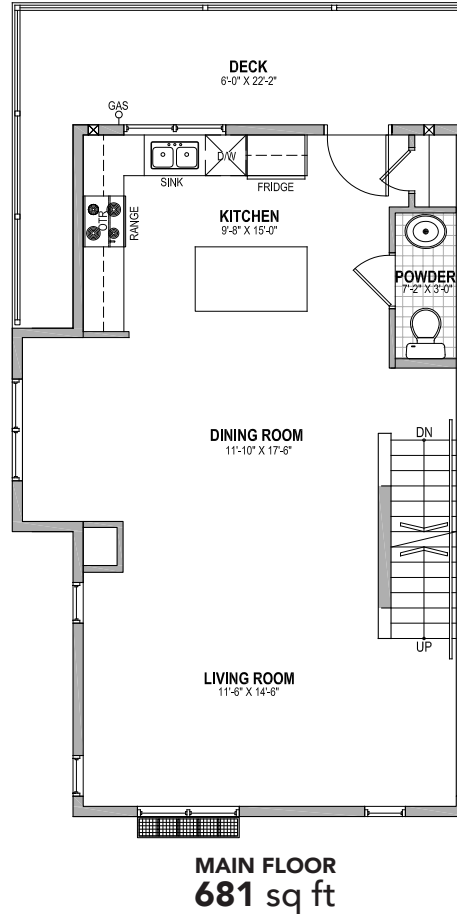
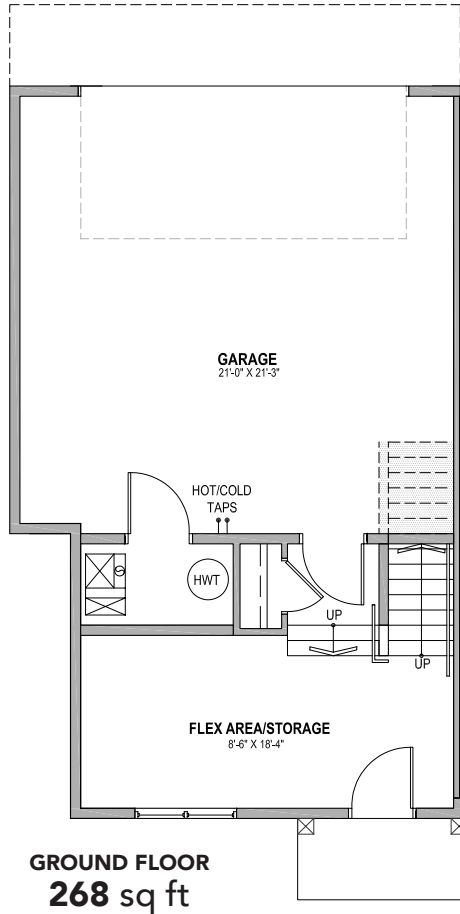
Plan B3

3-Bedroom - Approx 1,750 sq ft



Plan B5

3-Bedroom - Approx 1,616 sq ft

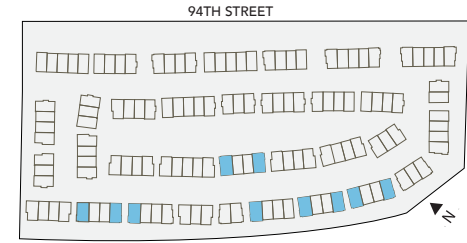
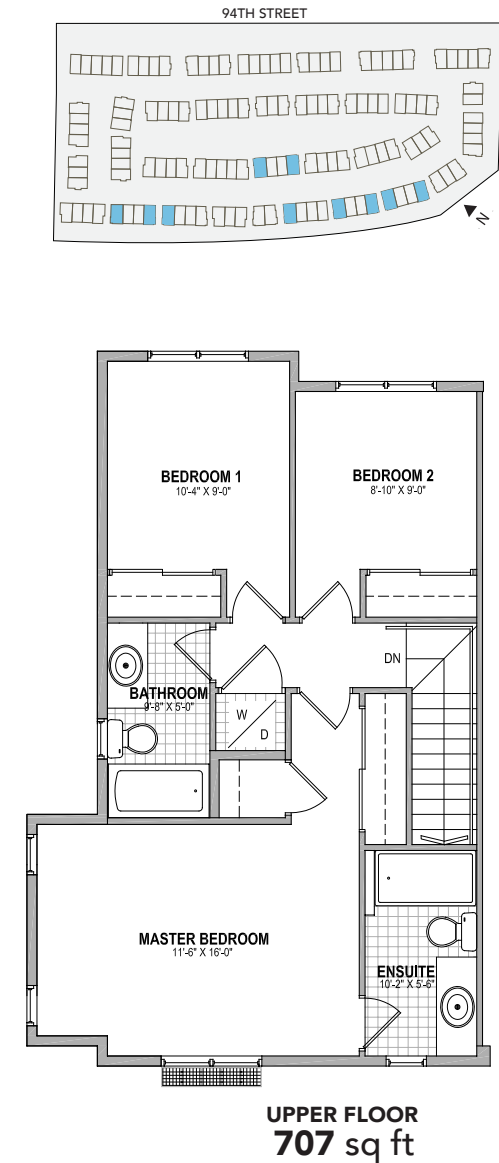
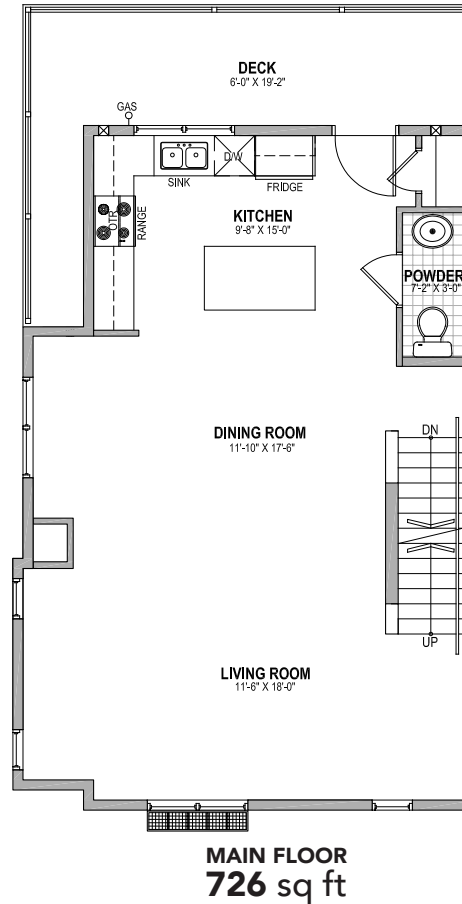
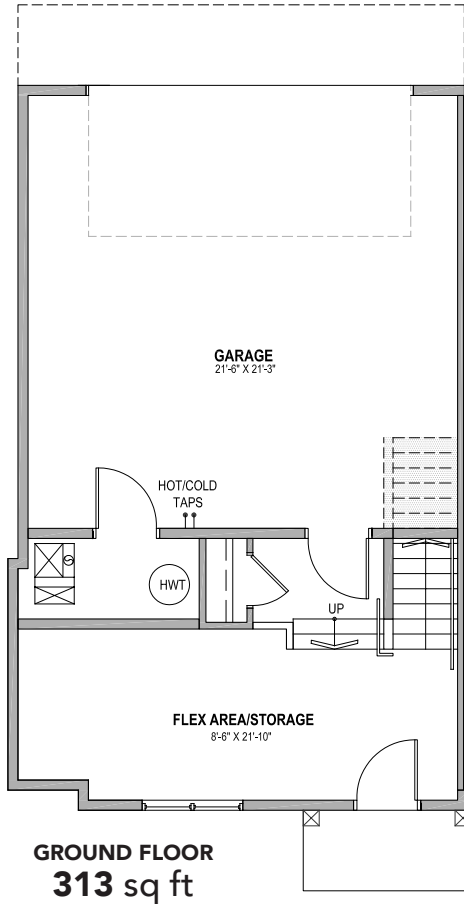


300, 8530-94 Street, Fort Saskatchewan

By appointment only. Call 780.809.8589

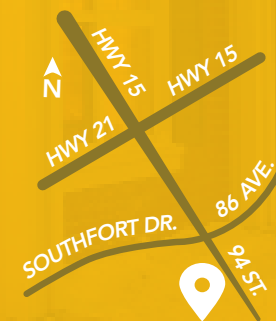
Plan B6

3-Bedroom - Approx 1,746 sq ft



park homes

CLIO



300, 8530-94 Street, Fort Saskatchewan
780.809.8589
clio.sales@parkhomes.ca
parkhomes.ca